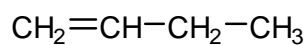


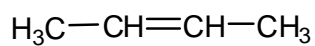
## Chapter 07 Worksheet 01

Give an acceptable IUPAC name for each of the following compounds. Be sure to indicate the **stereochemistry** where appropriate.

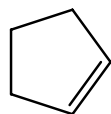
1.



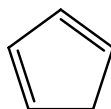
2.



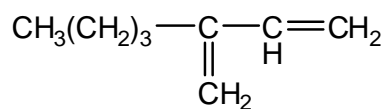
3.



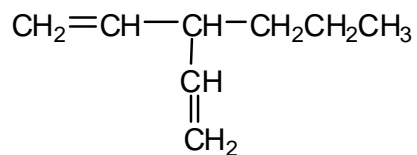
4.



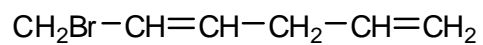
5.



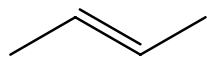
6.



7.



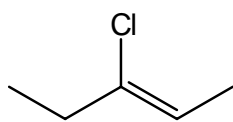
8.



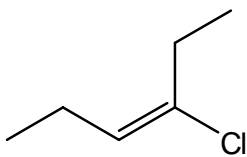
9.



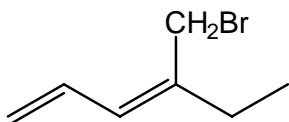
10.



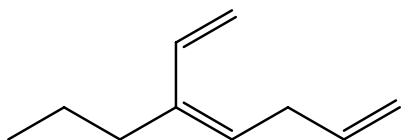
11.



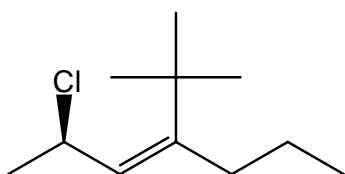
12.



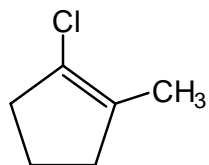
13.



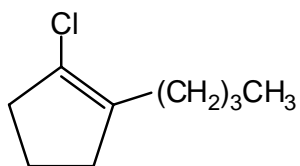
14.



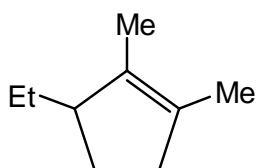
15.



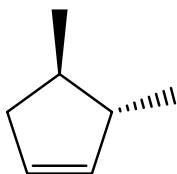
16.



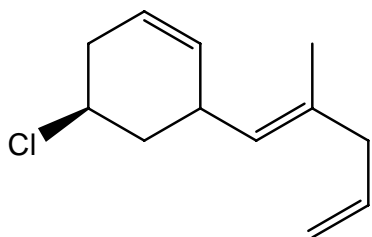
17.



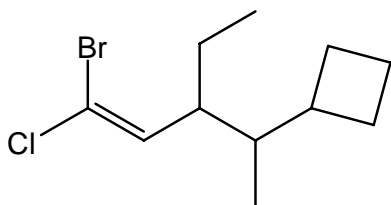
18.



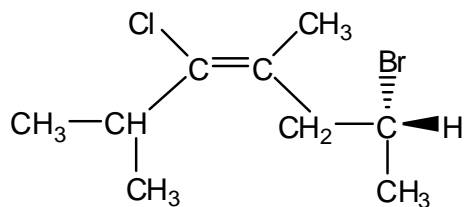
19.



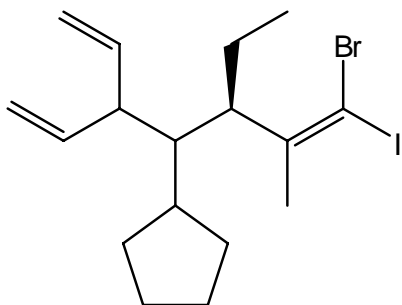
20.



21.




22.

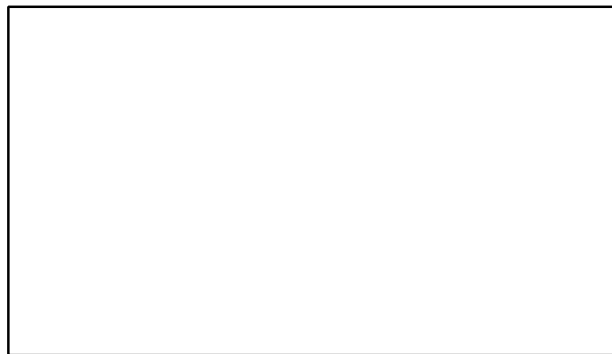



Draw the correct structure that corresponds to the following IUPAC names. Be sure to indicate **stereochemistry** where appropriate.

23. trans-penta-1,3-diene

24. (2E,4Z)-3-chloro-5-methylhepta-2,4-diene

25. 1-chlorocyclopenta-1,3-diene



26. cis-3,4-dimethylhex-2-ene



27. (3R,4S)-3,4-dimethylcyclohexene



28. (2Z,5E)-3,6-dichloroocta-2,5-diene



29. (5R,6E)-4-t-butyl-6-chloro-5-methylocta-1,6-diene



